

HYATT
REGENCY



Cathedral Place

925 West Georgia Street

Leasing
Opportunities



2024 BOMA
Best Platinum
Certification

HSBC

Cathedral Place Amenities



On-site management



Parking rates from \$285/month



1:1,000 parking ratio



Recent elevator modernization



10 high-speed elevators



18 EV charging stations



24/7 security concierge



Access control & CCTV systems



On-site restaurant & coffee shop



Beautiful garden courtyard



Secure bike storage rooms



New End of Trip Facility & Fitness Centre

Sustainability and Accessibility Features



2024 BOMA Best Platinum Certification



2025 NRCAN Energy Star Certification

88/100

Current Energy Star Score



Rick Hansen Accessibility Certification





Cathedral Place is prominently located on the northwest corner of Hornby and West Georgia Streets in the very heart of Vancouver's Central Business District.

One block away from Pacific Centre and Robson Street, a wide array of restaurants and the city's finest shops are all located within a short walking distance. Transport links are excellent with Burrard and Granville Stations located within close proximity, providing quick access to SkyTrain, Canada Line and connecting bus services.



Retail Shops

Black Goat Cashmere

Bread & Butter Café

ba&sh Women's Clothing

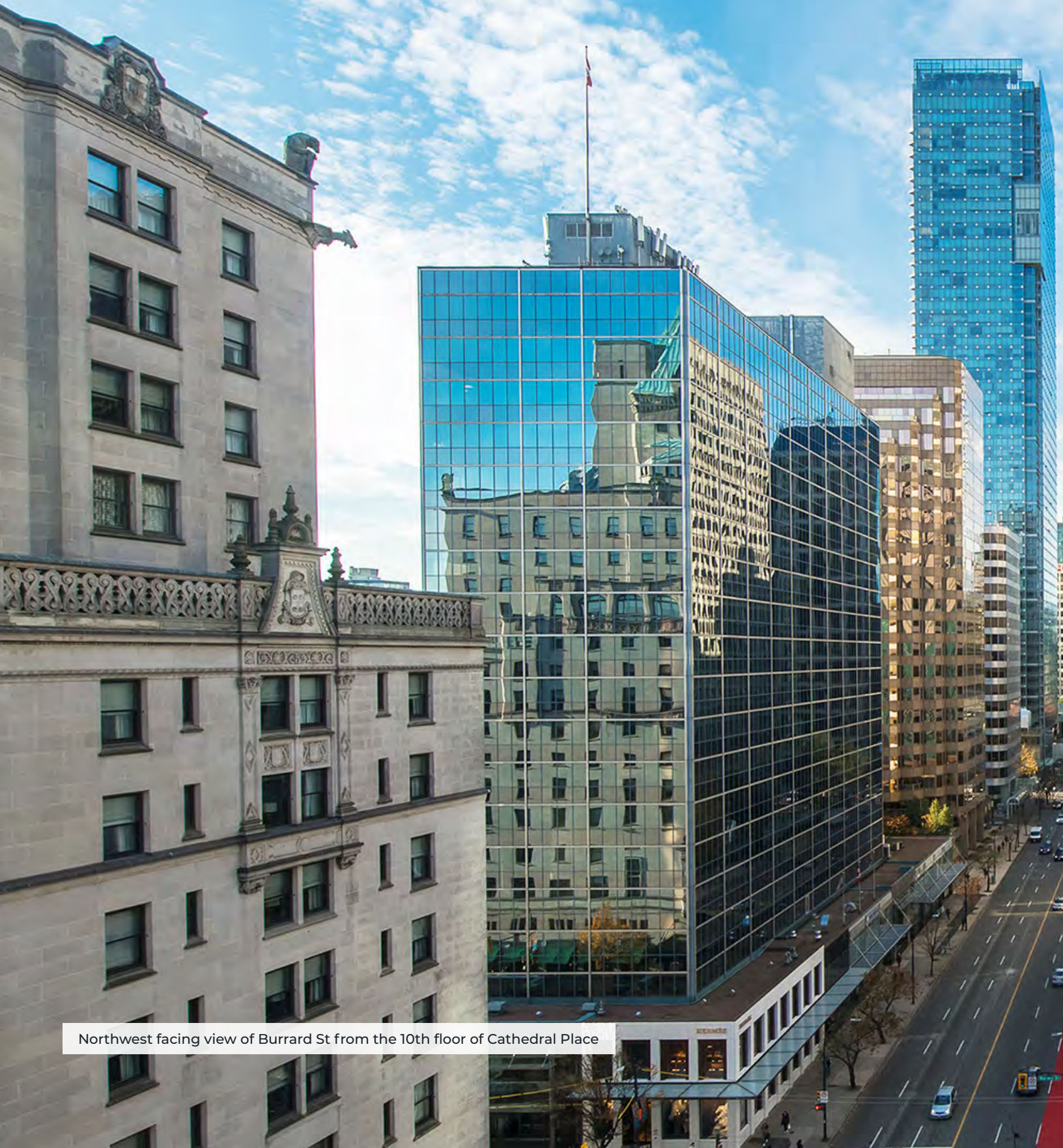
Merle Norman Cosmetics/Studio F/X

My Honey's Buns

Transcend Specialized Dentistry



Leasing Opportunities



Northwest facing view of Burrard St from the 10th floor of Cathedral Place

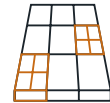


Spaces can be leased as-is, a market TI allowance can be provided, or our team can design-build turnkey custom improvements on a tenant's behalf.
All at competitive rates.

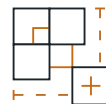
Office Space Features



10' to 11.5' exterior glazing for max natural light



Large column free floor plates



Centre core design for max space efficiency



Outstanding views even on lower floors



24/7 tenant server room cooling system



Updated DDC controls for optimal space temperatures

Unit 1918

BUILDING

Cathedral Place

ADDRESS

925 West Georgia St

SPACE

19th Floor

TYPE

Office

AREA

4,283 s.f.

AVAILABILITY

Immediately

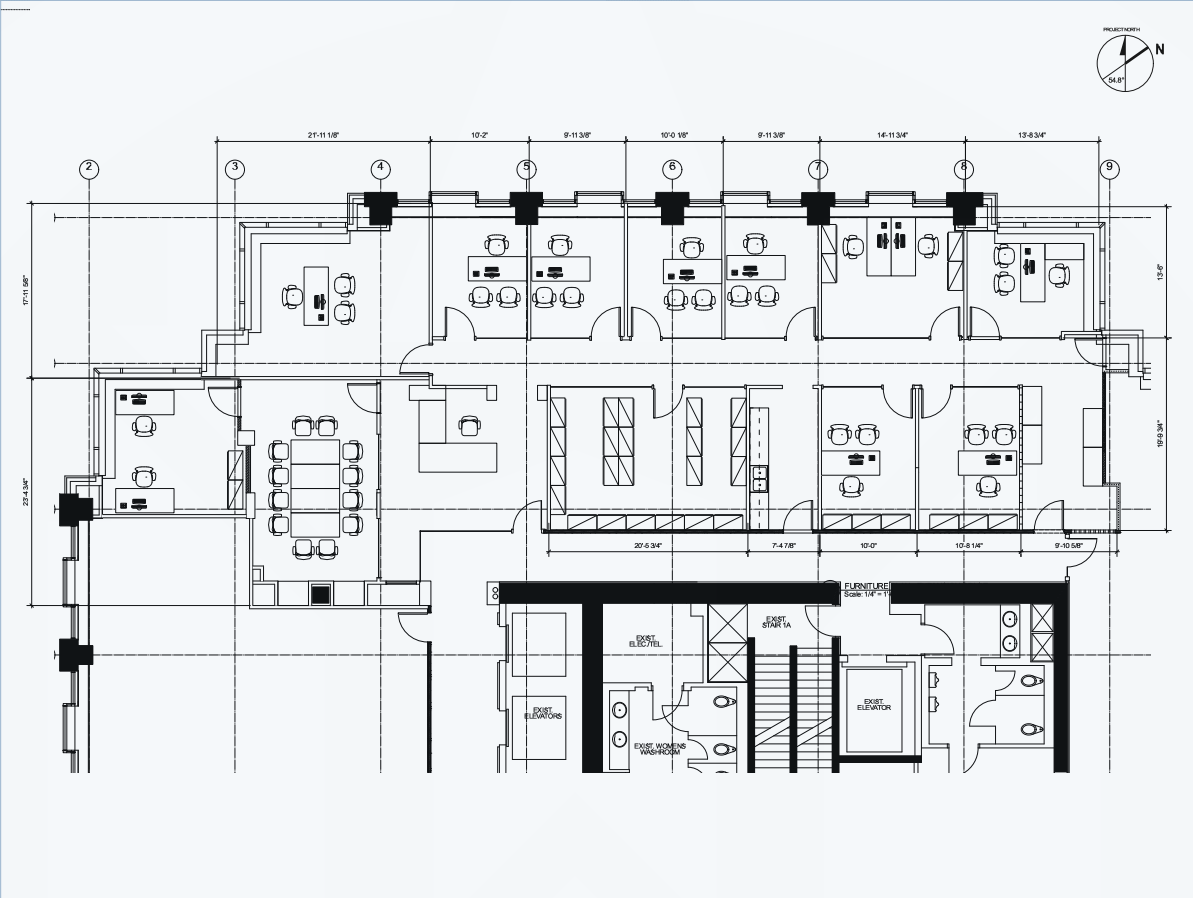
DETAILS

Exceptional leasing opportunity at Cathedral Place. 19th floor west facing unit with double glass entry with direct elevator exposure. Recently renovated with high quality improvements including elegant reception area, large boardroom, staff room, and mixture of perimeter offices and open work areas. Space features outstanding city views to the south, north, and west with two corner executive offices.

Landlord will renovate with new finishes and provide other improvements to suite new tenant.



As-Built Leasing Plan



Unit 909

BUILDING

Cathedral Place

ADDRESS

925 West Georgia St

SPACE

9th Floor

TYPE

Office

AREA

4,429 s.f.

May be combined with adjacent unit 910 for 7,426 s.f.

AVAILABILITY

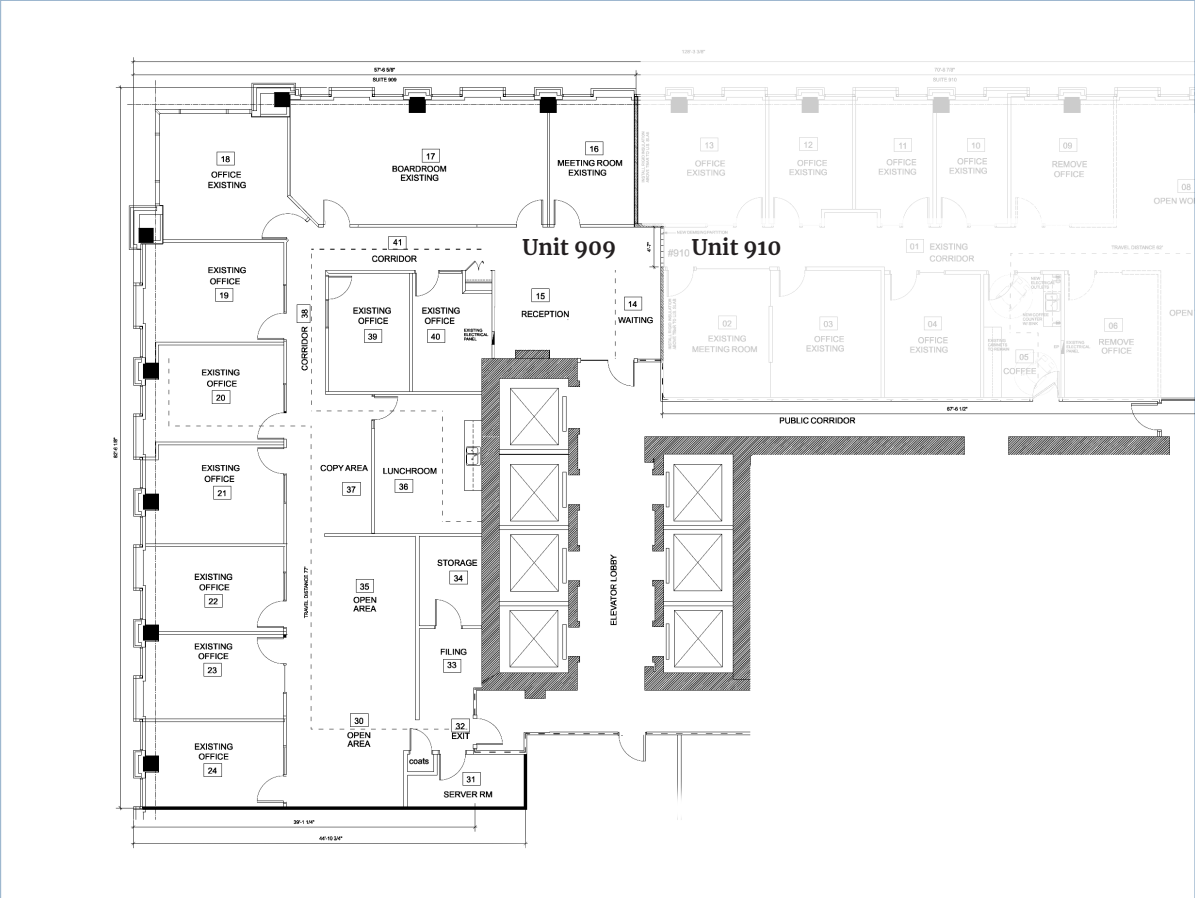
Immediately

DETAILS

Rare leasing opportunity to rent a mid sized executive office at Cathedral Place on the 9th floor with amazing City views to the west and south. Demised into a reception area, large board room, small meeting room, 9 enclosed offices including 7 perimeter, copy room, large staff kitchen, open work space for up to 6 workstations, and storage spaces. May be combined with adjacent unit 910 for 7,426 s.f.



As-Built Leasing Plan



Unit 910

BUILDING

Cathedral Place

TYPE

Office

AVAILABILITY

Immediately

ADDRESS

925 West Georgia St

AREA

2,997 s.f.

DETAILS

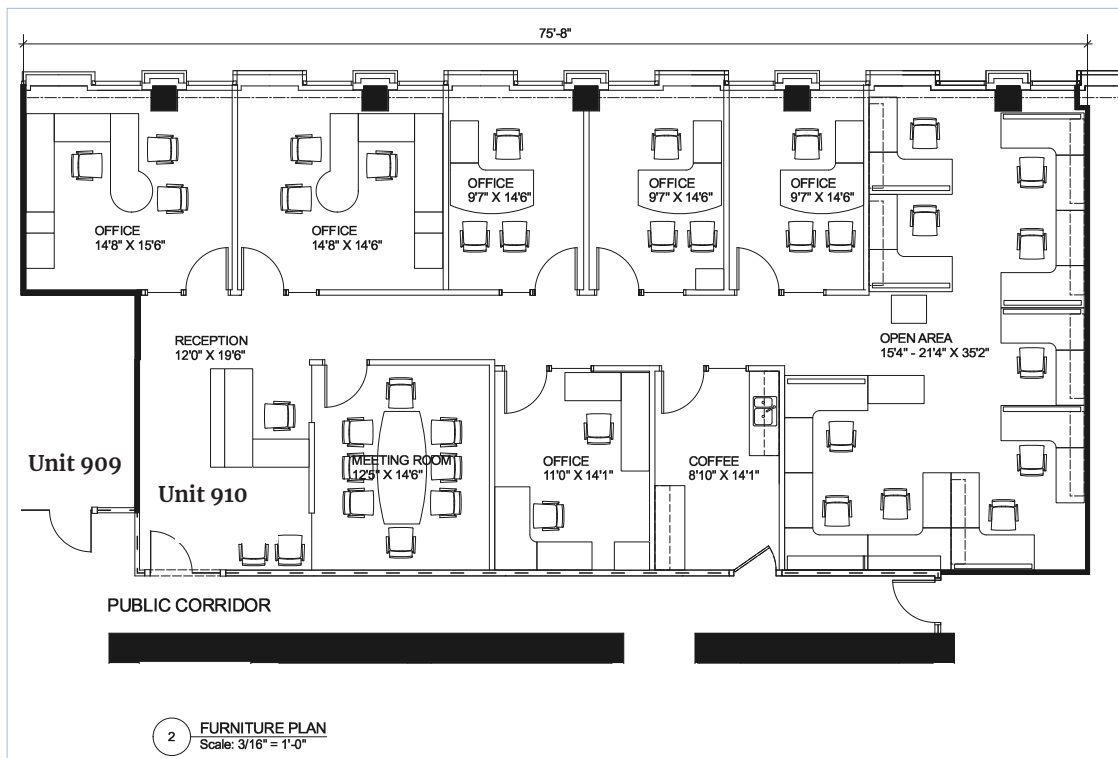
Rare leasing opportunity to rent a mid sized executive office at Cathedral Place on the 9th floor with easterly City views. Demised into a reception area, meeting room, 6 enclosed offices including 5 perimeter, staff kitchen, and open work space for up to 10 workstations. May be combined with adjacent unit 909 for 7,426 s.f.

SPACE

9th Floor

May be combined with adjacent unit 909 for 7,426 s.f.

As-Built Leasing Plan



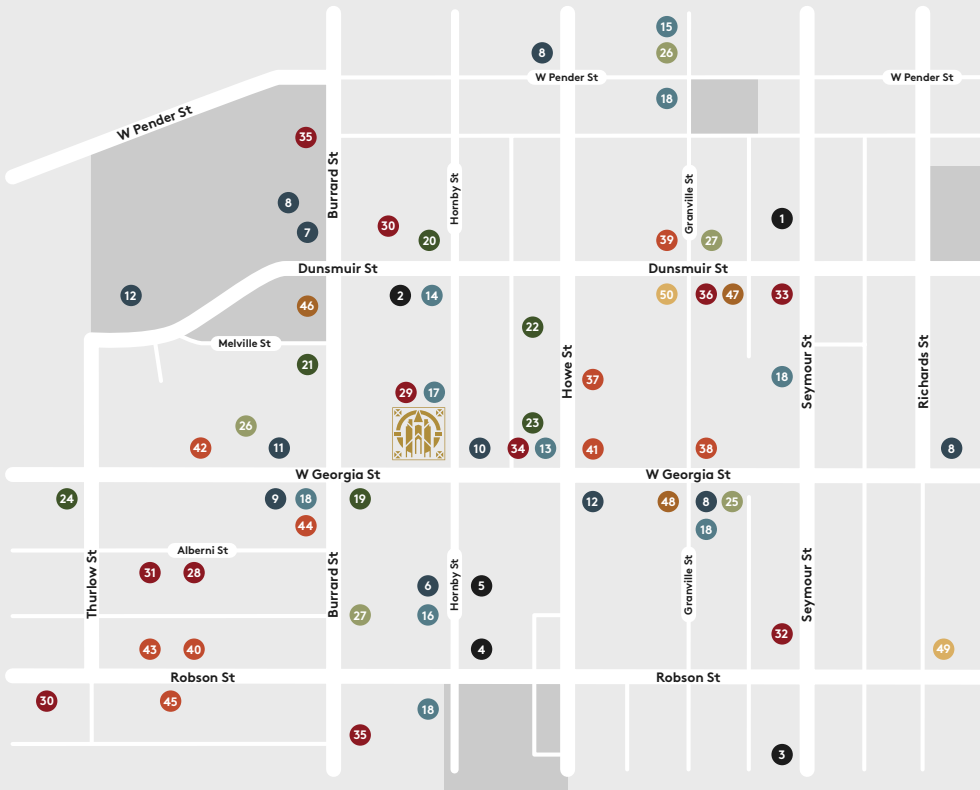
Cathedral Place Area Amenities



Custom tailored
property and asset
management
solutions since 1954.

WAYNE BEATTIE
**VP PROPERTY MANAGEMENT
& LEASING**

604 684 0925
wbeattie@shongroup.com
#820 - 925 West Georgia St
Vancouver, BC
shongroup.com



ATTRACTIONS

- 1 BCIT Downtown Campus
- 2 Bill Reid Gallery of NW Coast Art
- 3 The Orpheum
- 4 UBC Robson Square
- 5 Vancouver Art Gallery

BANKS / SERVICES

- 6 Avis Car Rental
- 7 BMO
- 8 Canada Post
- 9 CIBC
- 10 HSBC
- 11 RBC
- 12 TD

CAFÉS

- 13 Bel Café
- 14 JJ Bean Coffee Roasters
- 15 Trees
- 16 Faubourg Paris
- 17 My Honey's Buns
- 18 Starbucks

HOTELS

- 19 Fairmont Hotel
- 20 Hotel Le Soleil
- 21 Hyatt Regency
- 22 Metropolitan Hotel Vancouver
- 23 Rosewood Hotel Georgia
- 24 Shangri-La

PHARMACIES

- 25 London Drugs
- 26 Rexall
- 27 Shopper's Drug Mart

RESTAURANTS

- 28 Black + Blue
- 29 Bread and Butter Café
- 30 Cactus Club
- 31 Coast
- 32 Five Guys
- 33 Gotham Steakhouse & Cocktail Bar
- 34 Hawksworth
- 35 JOEY
- 36 The Keg Steakhouse + Bar

SHOPS

- 37 CF Pacific Centre
- 38 Hudson's Bay
- 39 Holt Renfrew
- 40 Indigo
- 41 Apple
- 42 Royal Centre
- 43 SEPHORA
- 44 Tiffany & Co
- 45 Zara

SKYTRAINS

- 46 Burrard Station
- 47 Granville Station
- 48 Vancouver City Centre Station

SUPERMARKETS

- 49 IGA
- 50 Meinhardt Fine Foods

